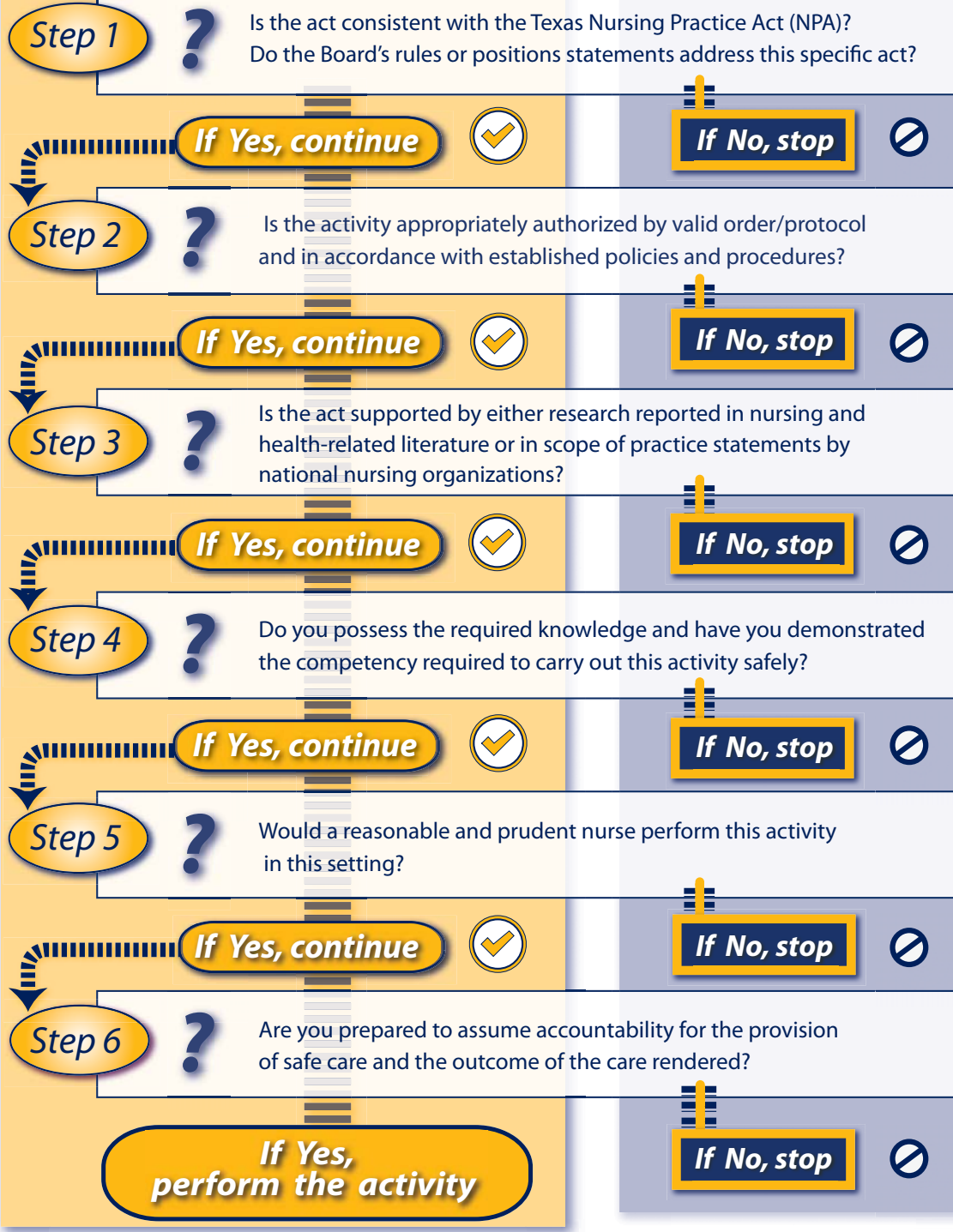


Six-Step Decision-Making Model for Determining Nursing Scope of Practice

Is this task or procedure in my Scope of Practice?

Six Steps will help you find out



This decision-making flowchart was developed by Texas Board of Nursing (BON) staff to assist nurses in making good professional judgments about nursing tasks or procedures. For more information, visit: www.bon.state.tx.us